



ANNUAL REPORT

2025



E-WASTE
RECYCLING
AUTHORITY



Contents

Chairman’s Foreword.....	4
CEO Message	6
About our Work.....	10
ERA Strategy House	12
Results	14
Governance Report.....	16
Producer Members	18
Placed on Market Data	19
Service Providers	20
Collection and Treatment	22
Recycling Statistics.....	22
Infrastructure Development.....	24
Jobs.....	26
Advancing Municipal Collaboration.....	27
Informal Waste Reclaimers.....	28
Human Resources	30
Public Awareness and Education.....	32
Enterprise Development Projects.....	34
Eco Labelling.....	36
Producer Members	40
Audited Annual Financial Statements Summary.....	42

Foreword

Dr. Richard Noor



It is a profound privilege to present the 2025 Annual Report for the E-waste Recycling Authority (ERA). When we reflect on the trajectory of this organisation, from its origins as a steering committee to its current standing as a mature, multi-sector Producer Responsibility Organisation (PRO), 2025 emerges not merely as a year of operational success, but as a defining milestone in our evolution. A year which has laid a solid foundation for the work that lies ahead, working towards a sustainable planet for humanity.

For the first time in our history, ERA exceeded its national collection targets for both Waste Electrical and Electronic Equipment (WEEE) and Lighting. While the Chief Executive Officer's report will detail the operational mechanics of this achievement, from the Board's perspective, this milestone represents something deeper: it is the ultimate validation of our operating model, our governance structures, and the trust placed in us by

our stakeholders. For this achievement, we owe a deep debt to our team on the ground.

The primary role of the ERA Board is to ensure that the organisation's rapid growth is matched by unassailable institutional integrity, rigorous accountability, and sound strategic foresight. In 2025, ERA experienced unprecedented expansion, including a 55% year-on-year growth in our producer membership, which now stands at 104 members. Managing growth of this magnitude requires a robust governance framework. I am pleased to report that the Board and its committees have maintained stringent oversight over ERA's financial health, operational compliance, and strategic direction. We have successfully navigated a complex regulatory landscape while ensuring that our financial position remains resilient and sustainable.

This year, we have proven that ambitious environmental targets are not just aspirational; they are achievable.

The success of an EPR scheme is inextricably linked to the commitment of its Producer Members. The growth of our membership base is the most significant indicator of industry confidence in ERA and we do not take this trust lightly. Our members are the pioneers of product stewardship in South Africa, and the Board remains focused on ensuring that ERA

delivers value and economies of scale to every producer under our umbrella, while fulfilling its EPR mandates. We are grateful for the expertise and contribution made by our Producer Member Directors who add significant value to our ever-changing landscape.

Equally vital is our network of service providers – the collectors, recyclers and informal reclaimers who form the engine of the circular economy. The Board recognises the extraordinary innovation and dedication demonstrated by this network in 2025, particularly in driving our WEEE landfill rate down to a near-zero 0.27%.

As we look to the future, the Board’s focus remains on providing oversight and guiding our organisation that continues to scale its impact. We are moving beyond bespoke projects toward systemic, nationwide integration.

An organisation is only as strong as its people. On behalf of the Board, I extend my deepest gratitude to our Chief Executive Officer, Ashley du Plooy, and his dedicated management team and staff.

They have navigated a demanding year with extraordinary resilience, focus, and competence.

I also wish to thank my fellow Board members for their diligent oversight and strategic counsel, the DFFE for their continued constructive engagement, and, most importantly, our producer members and service providers.

Together, we have proven that ambitious environmental targets are not just aspirational; they are achievable. We are not just managing waste; we are actively constructing the circular economy that South Africa needs and deserves, saving the environment and building dreams and hope for generations to come.

Despite the turmoil that has erupted across the globe in 2026 we remain optimistic and excited knowing full well that the focus of all our stakeholders has been strengthened during our formative years and that our collaborative approach will continue to forge a cohesive vision for the continued growth of our organisation.



CEO Message

Ashley du Plooy



This programme not only diverts significant waste from landfills but provides a crucial livelihood for many, embodying the social dividend of the circular economy.

Reflecting on 2025 and the distance covered since ERA's genesis as the Ewaste Steering Committee in 2014, and its transition into operation as an EPR Scheme in 2021, there is real reason to feel a great sense of accomplishment.

Staff and Organisation

2025 saw ERA maturing into a substantial contributor to all the key metrics driving Extended Producer Responsibility (EPR) in South Africa. It was a year in which our collective capacities, applied with focus and commitment, led to consolidation and unprecedented growth. The strategic foundations which we meticulously laid down over the years yielded exceptional results that have set a new benchmark for EPR compliance in South Africa. ERA's committed, focused and multi-skilled staff helped it overcome the shortfalls in its staff complement. We look forward to growing our staff as we grow into our next 5 years of EPR growth and the consolidation of systems that can serve our circular economy goals.

The ERA board remains representative of members who are complemented by independent directors to support and direct the organisation's institutional integrity and accountability, as well as provide strategic oversight and support to management

Producer Members

Our headline achievement is undoubtedly that we surpassed our WEEE and Lighting collection and recycling targets, having reached 115% of target. This milestone was anchored by the relationship of trust that we have built with our expanding membership now standing at 104 producers. We remain focused in our effort to build our membership so that more producers may benefit from the economies of scale that such scale creates and ensure that there is no unfair EPR cost-burden on our compliant EPR producers. We recognise and celebrate our members as the pioneers of producer responsibility in South Africa.

Collection and Service Provision Network

Another critical achievement is the cost-efficient collection and processing of WEEE by our service provider network who earnestly strive to meet our collective socio-economic and environmental objectives. These, and other results provide a clear signal that the EPR model in South Africa is, and in due course, will thrive as a critical instrument for effective waste management in South Africa.

Waste to Landfill

ERA took a monumental step towards its goal of zero waste to landfill. In 2025, we achieved a WEEE landfill rate of just 0.27%, a dramatic improvement from previous years' 1% landfill rate. This will improve going forward as new waste processing and beneficiation solutions are being pioneered by our Service Provider Network. Our new Battery and Lighting streams performed exceptionally, with an incredible 100% of all collected items being fully recycled. This is a powerful testament to our collective commitment to maximise resource recovery from waste.

Budget and Infrastructure

ERA has demonstrated its sustainability and resilience, with income growth of 54% year-on-year. Our relatively strong financial position allows us to fulfil our core mandate of diverting waste from landfill and to reinvest in critical areas like infrastructure, which we expanded by over 50% to 132 collection points, as well as pioneer our informal waste reclaimer integration programme.

Informal Reclaimer Collection Service / Integration

Our support to the informal reclaimers sector remains a key objective, and while we have made some headway in the distribution of our Informal Waste Reclaimers Collection Service Fee, we are set to expand our results in very substantial measure in the coming years. In 2025, we supported 1,663 unique Informal Waste Reclaimers, who brought in over 114,000 Kgs of e-waste - a 45% increase from 2024. Informal Reclaimers can and will divert significant waste from landfills driven by the financial recognition of their services and provide a crucial livelihood for many, embodying the social dividend of the circular economy.

SMME Development

ERA has and will continue to seek partnerships with development funding institutions to expand its efforts in waste SMME development. We are proud of the growth of our SMME projects working with youth, women and people living with disabilities. We acknowledge DFFE's endorsement of our SMME projects and will work, with urgency, to (a) consolidate the stability of our existing projects with a view to (b) replicating these kinds of initiatives nationally, as requested by DFFE.

Jobs

Our efforts have created 150 new jobs this year, bringing the cumulative total to 480 jobs supported since ERA's inception. We are building not just a recycling network, but a vibrant economic ecosystem that provides sustainable employment.

CEO Message

Our EPR collection and recycling subsidies for WEEE, Lighting and Batteries enable the following circular economy growth indicators within our EPR Scheme:

- Annual WEEE Stock Market of R50m+ p.a. through buy-back activity
- Informal Reclaimer Collection Service Fee R3m+
- Job Creation, additive, year-on-year came to 480 over the period 2022 to 2025.
- Increased technology investments for WEEE solutions

There are tentative signs of traction in our efforts to stimulate the repair and refurbishment recyclers to report their data and establish effective linkages into the EPR dispensation.

Lifecycle Assessments and Eco-labels

In 2026, we are tackling the challenge of Lifecycle Assessments in true ERA style – novel and pioneering. Our work on gathering eco-labels from our members completed its second iteration in 2025 and in 2026 we trust that ERA will have enough data to provide an evidence-based framework for taking it further.

We continue to apply ourselves to life cycle assessments of the products in our Producer basket by finding the best

available methodologies and service providers.

Partnering with DFFE

ERA continued to partner with government to inform the public, through all provincial and municipal roadshows and imbizos, about Ewaste. We remain committed to deepening our municipal engagement to create a truly integrated national e-waste management system.

Study Visits

We are grateful to the WEEE Forum and our sister PRO, SENS, for facilitating a learning journey to Swiss and French domestic appliance, battery, lighting and solar photovoltaic recycling facilities to deepen our understanding of mature recycling systems operating at large scale. ERA continues to facilitate site visits to its own service provider sites for government and its producer members for insight and where necessary, assurance that their WEEE is properly processed and accounted for.

Annual International WEEE Day Conference/s

ERA, for a second year, has hosted a series of conferences (seminars) for key stakeholders in the WEEE circular economy sector. The event/s are organised around International Ewaste Day (14 October) and had senior delegates from government, producers, recyclers, SMME projects, strategic stakeholders, and corporate service providers discussing and learning about PRO models, recycling solutions, socio-economic impact and a review of the EPR landscape 4 years into operation in South Africa.

Thank You

There are many individuals and organisations to thank for the advances we were able to make in 2025. The ERA staff were sterling in their effort and competence, the ERA board in its diligent oversight and direction, our recyclers and projects for working hard to meet our WEEE processing and administrative demands, government for a constructive engagement, and all who kept our keel even in sometimes challenging times. And to our rapidly growing family of members who anchor and scale all the work towards a circular economy that serves a healthy planet and her people.

2025: A Year of Landmark Achievements

When ERA began its journey as an operational EPR scheme in 2021, we collected 780,000 Kgs of e-waste from a membership base of 42 producers. Four years later, that figure stands at over 17.6 million Kgs, a more than twenty-two-fold increase, drawn from a membership of 104 producers spanning the WEEE, Lighting, and Battery sectors. This trajectory is the result of deliberate, consistent effort: building trust with producers, investing in infrastructure, developing our service provider network, and deepening our reach into communities that had little access to responsible e-waste collection.

2025 was the year in which that accumulated effort crystallised into landmark achievement. Our results from 2021 – 2025 tell a story of compounding progress. Each year has built on the last, and 2025 represents not a ceiling but a new baseline.

	2021-2022	2023	2024	2025	Total 5 Year Outcome
Membership	42	45	69	104	150
National Collection Target (Kgs)	36 000 000	47 000 000	61 000 000	79 000 000	223 000 000
ERA vs National Target (Kgs)	9 000 000	11 750 000	18 300 000	15 672 000	54 722 000
ERA vs National Target %	25%	25%	30%	20%	25%
ERA Collection Achieved (Kgs)	780 000	10 741 000	15 547 000	17 656 633	44 724 633
ERA Collection Achieved vs NAT	2%	23%	25%	22%	20%
PoM Projections (Kgs)	95 310 265	126 000 000	126 723 809	178 340 000	526 374 074
PoM Achieved (Kgs)	102 332 965	93 002 443	170 712 498	193 857 058	559 904 964
Jobs (Add)	4	131	194	151	480
Informal Waste Reclaimers Supported	-	-	1 193	1 622	2 815
Collection Infrastructure	-	97	80 Bins + 13 BBCs	132 Bins + 18 BBCs	150

About our Work

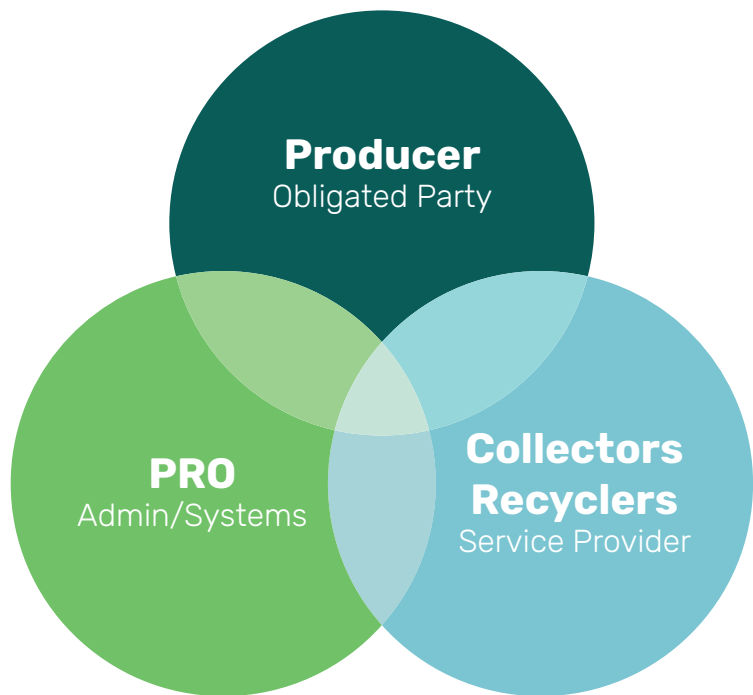
Purpose Statement

As an environmentally active organisation working to empower society and nurture the well-being of our planet, we believe that by pioneering a balance between responsible corporate citizens, people, and the environment, we are laying the foundations of prosperity for future generations.

At ERA we are constantly aware of the fact that the waste we recover today is the resource that sustains tomorrow. Every kilogram diverted from landfill is not merely an environmental act; it is an investment in the economy, the community, and the generations who will inherit the world we leave behind.

Operating Framework

ERA's approach to Extended Producer Responsibility is built on a simple but powerful premise: that lasting environmental impact is only possible when the right parties work together with shared purpose. At the centre of everything we do is a tripartite model uniting Producer Members, Service Providers, and ERA as the Producer Responsibility Organisation (PRO), each playing a distinct and indispensable role in the circular economy.



2025 demonstrated the full strength of this model. A 55% increase in Producer Membership to 104 members speaks to the deepening confidence that industry places in ERA as a credible, transparent, and effective EPR partner. On the ground, our Service Providers - the collectors, dismantlers, and recyclers who transform collected material into secondary resources - delivered results that exceeded our collection targets for the very first time in ERA's history.

ERA's independence from the commercial waste value chain is what makes this model work. It ensures that every decision we make is guided by environmental integrity and good governance, not commercial interest. In 2025, this independence underpinned a deliberate strategy: to

prioritise depth over breadth in our service provider relationships, ensuring quality and full EPR compliance, while simultaneously opening access to the public through a 50%+ expansion of our national collection infrastructure to 132 points. Our informal reclaimer integration programme grew in parallel, embedding social inclusion as a structural feature of our circular economy, not an afterthought.

We are building more than a recycling network. We are cultivating an ecosystem in which producers, recyclers, reclaimers, and communities are bound together by a shared commitment to a South Africa where nothing of value is wasted.



The ERA Strategy House

Since 2023, our work has been guided by the ERA Strategy House, a framework that ensures our growth is balanced, sustainable, and true to our mission. It's four pillars: Stakeholder Experience, Governance, First-Class Administration, and Culture and People, remained instrumental throughout our record-breaking year in 2025.



Our commitment to Stakeholder Experience was reflected in our **55% growth in Producer Membership and the 50%+ expansion** of our public collection infrastructure.

For Governance, we maintained full statutory compliance and robust Board oversight, reinforcing our commitment to transparency. Our relentless pursuit of First-Class Administration resulted in surpassing our collection targets for the first time and achieving a near-zero landfill rate. Finally, Culture and People was perhaps our most tested pillar in 2025. It was a year that demanded difficult interventions. With focused attention, however, we have navigated through a challenging period and emerged with greater clarity and drive to continue to build the culture we want.

In 2026, our commitment to this pillar takes on renewed purpose - investing in a people environment where every team member

is supported, valued, and empowered to thrive.

What makes the ERA Strategy House more than a framework is its consistency. Since its introduction in 2023, these four pillars have remained unchanged, and that is a deliberate choice. Organisations that reinvent their strategy with every cycle risk becoming unrecognisable to the very stakeholders they serve, eroding the trust and familiarity that take years to build. ERA has chosen a different path.

By staying true to the same foundational focus areas, we have allowed each year to be an iteration of improvement rather than a reinvention. The result is an organisation that is becoming progressively more refined - sharper in its execution, more efficient in its operations, and more deeply embedded in the confidence of its members, partners, and the communities it serves. We are not starting over. We are only getting better.

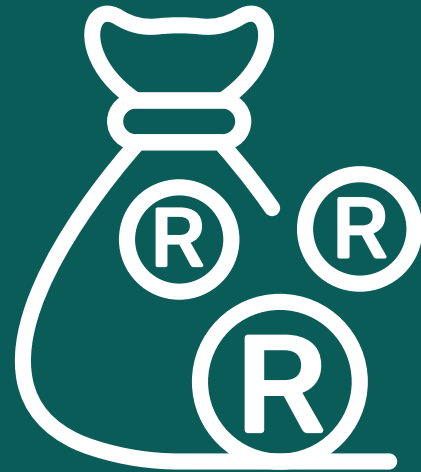


Results

Income

R86,108 m

Income achieved



Spend

Administration:

R12,877 m

14,95% to Revenue &
11,75% to Budget

Collection & Treatment:

R52,136 m

60,55% to EPR Fee Income
WEEE: R48,366m
Lighting: R3,653m
Batteries: R0,116m

Average per Kg processed

R2,89 /Kg

WEEE: R2,74/Kg
Lighting: R10,70/Kg
Batteries: R9/Kg

Buy-back Centres & Drop-off Points

18

Infrastructure

227

Placed: 132
To be placed: 95



Producer Members

104

50,7% growth from 2024



PoM (Kgs)

193 857 058 Kgs

182 340 000 Kgs projected (106,3% achievement)

Collection & Recycling (Kgs)

18 011 170 Kgs

WEEEL 2024 = 15 846 102 Kgs – 13,6% Growth
Target = 15 672 000 (114,9% Achievement)



Jobs

in ERA



7

-2 from 9 in 2024

in Service Network

150

194 in 2024

Informal Waste Reclaimers

1 663

Unique
Collectors

Social Media Reach



1 358 248

Facebook, Twitter, LinkedIn & Instagram

Governance Report

Appointment and Rotation of the Board of Directors

The Ewaste Recycling Authority NPC (ERA NPC) operates in full compliance with the Companies Act, 71 of 2008, and the Extended Producer Responsibility Regulations (R1184, R1185, and R1186).

The Board of Directors is as follows:

Role	Name	Sector	Note
Executive Director	Ashley du Plooy	Ex-officio	May 2018
Chair	Richard Noor	Independent	March 2023
A&R Chair	Yalekile Lusibane	Independent	March 2023
TBC	Vacant	Independent	TBC
Sector	Vaughn Parkin	ICT	February 2023
Sector	Mlindi Mthethwa	Domestic Appliances	February 2023
Sector	Mark Saunders	Domestic Appliances	May 2018
Sector	Vacant	Renewables	TBC
Sector / PRO	Vacant	Lighting	TBC
Sector / PRO	Vacant	Battery	TBC

Note: Allowance is made for key sectors in which ERA has sizable producer membership.

Directors are appointed in accordance with the ERA Memorandum of Incorporation (MOI) and Section 66 of the Companies Act. Directors serve for a two-year term, renewable.

Board appointments are ratified at the AGM.

Board Sub-Committees

The following sub-committees have formally adopted Terms of Reference.

Audit and Risk Committee

- Financial Reports and Budgets
- Compliance with the Regulatory Universe and Statutory obligations
- Organisational Risk Matrix
- Audit Oversight
- Organisational Policies

Technical Committee

- Guides Eco-label mandates and outcomes
- Guides Life Cycle Assessments and outcomes
- Related matters as determined from time to time

Lighting Committee (PRO)

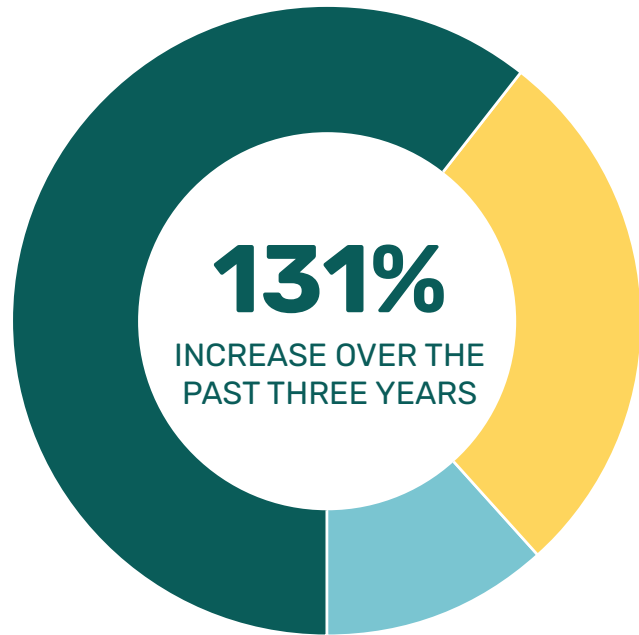
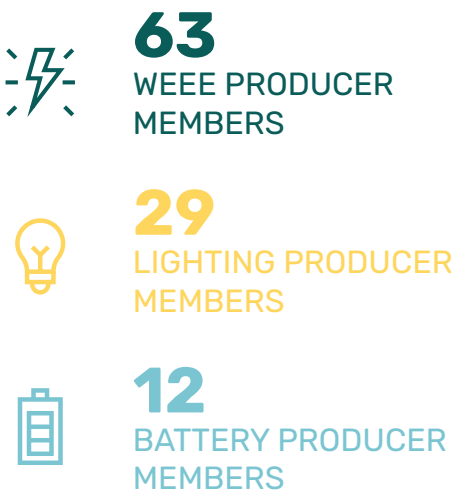
- Represent the sector on the board and its committees
- Guide Plans and Budgets (EPR Fees)
- Monitor progress and outcomes

Battery Committee (PRO)

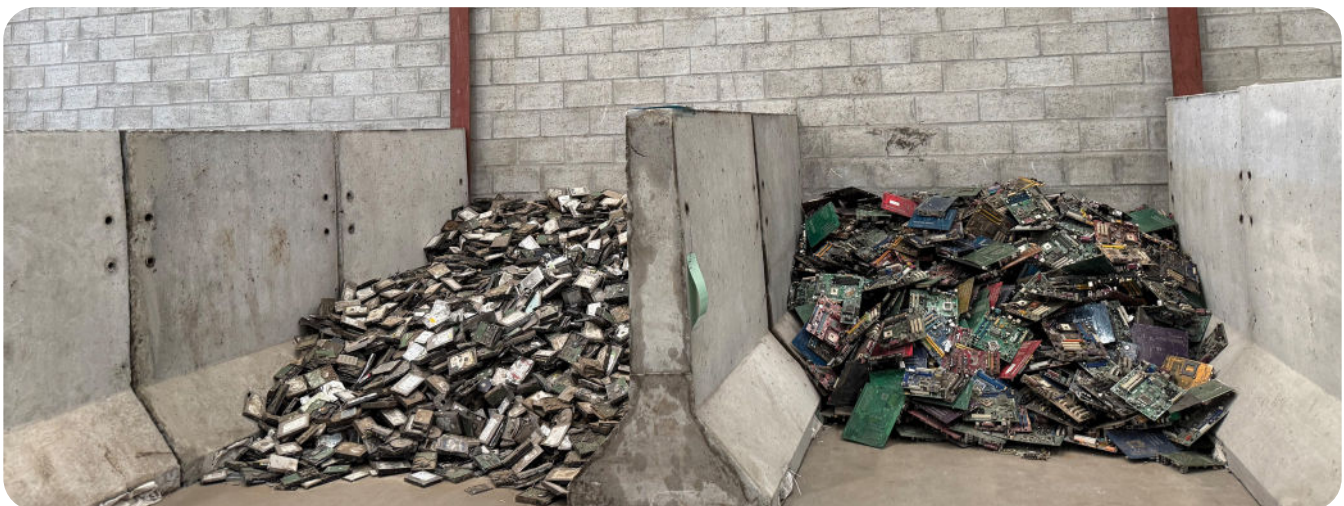
- Represent the sector on the board and its committees
- Guide Plans and Budgets (EPR Fees)
- Monitor progress and outcomes

Producer Members

The strength of our scheme lies in the commitment of our producer members. In 2025, our membership base grew to an impressive 104 producers across our EPR Notices, a 55% increase from 2024 and a 131% increase over the past three years. This association now includes 63 members in the WEEE sector, 29 in Lighting, and 12 in our newly activated Battery sector. This broad-based support is a powerful endorsement of ERA's model and mission.



There has been a noticeable uptake in Extended Producer Responsibility by Producers across several sectors which we attribute to the increasing enforcement action taken by the DFFE over the last year. This fact, coupled with ERA's strong governance and trusted market leadership position has led to our growing Producer membership result which we are immensely proud of.

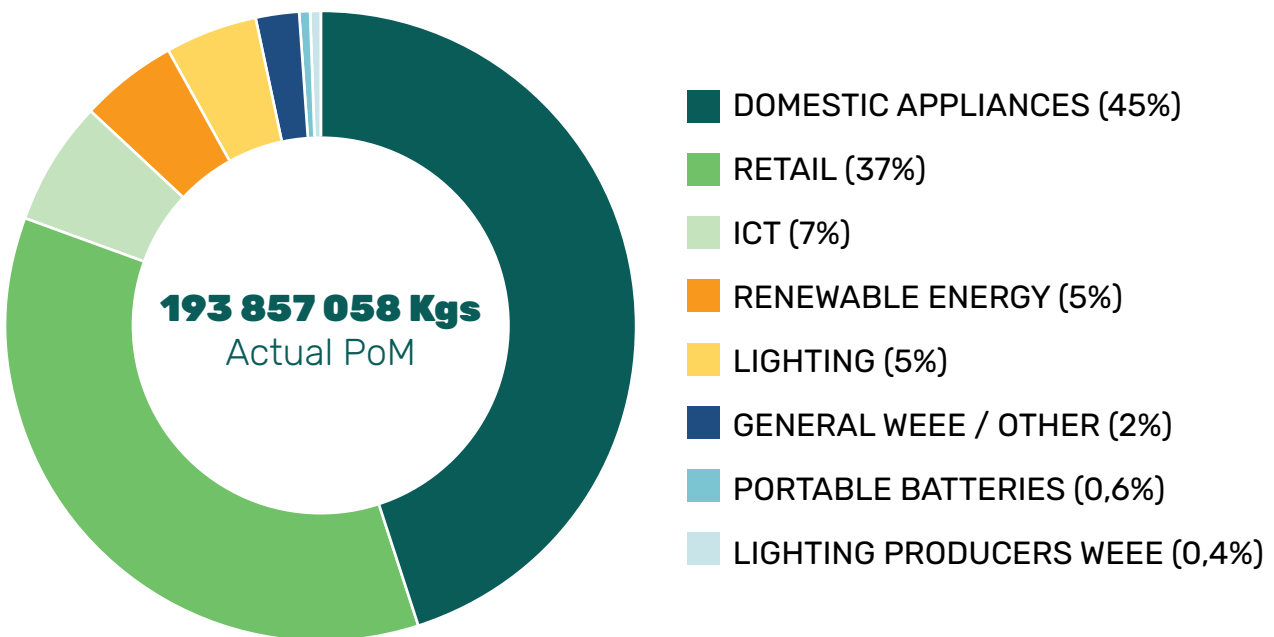


Placed on Market Data 2025

The total weight of products placed on the market by our members reached 193,8 million Kgs, substantially exceeding our collective target of 182,3 million Kgs and providing a solid foundation for our collection efforts. This also marks a YoY Growth of 13,56% from the 170,7million Kgs in 2024.

Period 1 Jan 2025 - 31 Dec 2025

Producer Sector	Actual PoM (Kgs)
Domestic Appliances	87 250 833
Retail	69 086 275
ICT	12 606 531
Renewable Energy	9 669 228
Lighting	9 180 095
General WEEE/ Other	4 336 546
Portable Batteries	1 077 579
Lighting Producers - WEEE	649 969
TOTAL	193 857 058



Service Providers

Powering the Circular Economy

At the heart of ERA's success is our network of dedicated and innovative service providers from large, vertically integrated recyclers to specialised boutique firms. In 2025, this network was instrumental in exceeding our collection targets and achieving a near-zero landfill rate for WEEE.

Our partners are developing world-class solutions in South Africa, demonstrating the immense potential of a locally-driven circular economy. While we are actively screening over 100 SMMEs to expand our network, our 2025 strategy prioritised scaling our impact through a few of our largest, high-performing partners.

Across the network, we are seeing remarkable innovation. One of our large recycling partners has pioneered a zero-landfill operation, using advanced thermal treatment (pyrolysis) to convert problematic mixed plastics from appliances into a high-quality oil. This oil is then used to fuel their own industrial foundry operations, creating a perfect circular loop and a self-sustaining business model. Other innovations include the creation of e-waste pavers and novel processes for solar panel refurbishment.

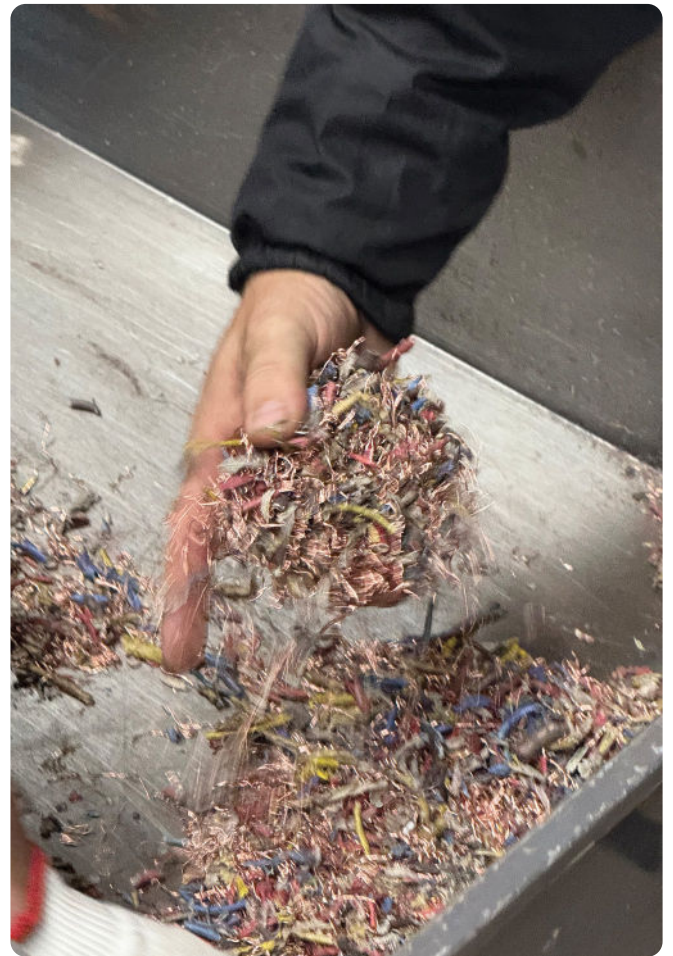
At the same time, boutique recyclers are focusing on moving up the value chain by prioritising reuse and refurbishment. By establishing dedicated IT Asset Disposition (ITAD) services and creating

a secondary market for spare parts, they extract maximum value from collected assets, proving that reuse is not only environmentally superior but also economically lucrative.

ERA is actively working with our entire service provider network to bring down the overall cost of recycling. By leveraging economies of scale and supporting the development of more efficient technologies, we aim to make the EPR scheme more sustainable for our producer members in the long term.

A key focus of this collaboration is ensuring that cost-negative fractions i.e. those materials that are expensive to process and have low commodity value, are handled in an environmentally sound manner. Through EPR funding and technical support, we empower our partners to invest in the necessary infrastructure to treat these challenging waste streams, preventing them from ending up in landfill and ensuring full compliance with environmental regulations.

The collaborative spirit within our network, where partners trade materials and share expertise, is building a resilient national value chain. Their collective vision is one of exponential growth, green job creation, and a South African recycling industry that sets a global benchmark for innovation.



Collection and Treatment

2025 marked a watershed moment as we surpassed our collection targets across the board, a first in ERA's history. This success is a direct result of our expanded infrastructure, strong public awareness campaigns, and the diligent work of our service provider network.

WEEE

We collected **17,656,633 Kgs** against a target of **15,372,000 Kgs**, achieving an outstanding **115%** of our target.

LIGHTING

We collected **341,604 Kgs** against a target of **300,000 Kgs**, achieving **114%** of our target.

BATTERIES

In its inaugural year, our new PRO collected **12,933 Kgs**, establishing a strong baseline for future growth.

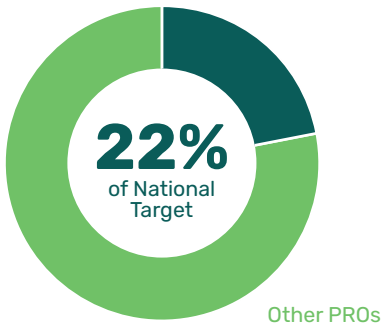
Critically, our treatment processes have become exceptionally efficient. Only 0.27% of collected WEEE was sent to landfill, a significant step towards our goal of zero waste to landfill. Furthermore, we achieved a landmark 100% recycling rate for all collected lighting and batteries, ensuring that these valuable and often hazardous materials are fully recovered and reintroduced into the economy.

Recycling Statistics

Headline processing results are reflected in the table below.

WEEE Collection (Kgs)	
Collection Target	15 372 000 Kgs
Collected	17 656 633 Kgs
Lighting Collection (Kgs)	
Collection Target	300 000 Kgs
Collected	341 604 Kgs
Battery Collection (Kgs)	
Collection Target	0 Kgs
Collected	12 933 Kgs

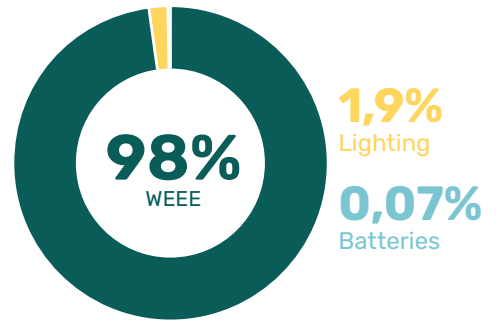
National Target



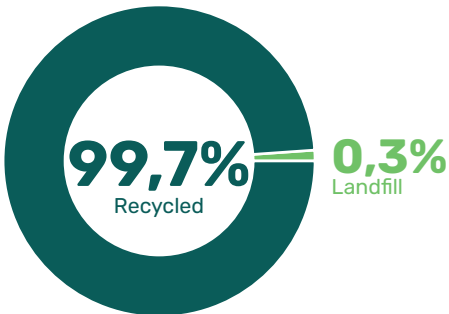
Target Achieved



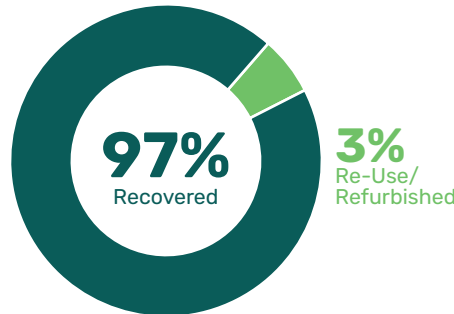
Waste Streams Processed



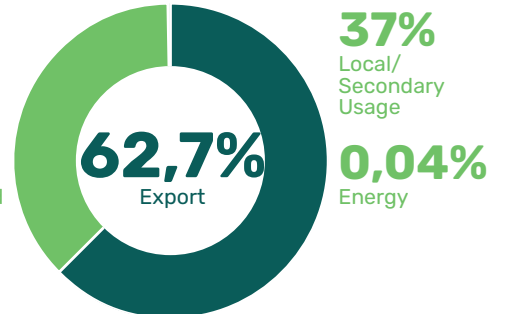
Recycled



% Processed



Destination of Processed Fractions



2024's collection and treatment figure was 15 846 101 Kgs across WEEE and Lighting waste streams. **ERA has achieved 13,66% growth YoY in this key metric.**

Below is the breakdown of our collection results (Kgs) into the key regulatory metrics

Collection	Re Use	Recovery	Recycling
18 011 170 Kgs	511 211 Kgs	17 010 100 Kgs	17 963 836 Kgs
Energy	Exported	Local Secondary Usage	Landfilled
6 242 Kgs	10 668 441 Kgs	6 335 417 Kgs	47 334 Kgs

Infrastructure Development

To support our collection growth, we undertook a massive expansion of our national infrastructure. The number of collection points grew by an exponential 50%, from 80 in 2024 to 132 in 2025. This network now comprises 132 deployed drop-off bins, 10 buy-back centres, and 8 drop-off points, with another 95 bins ready for deployment in early 2026. This expansion, made possible through strategic partnerships with national retailers like Pick n Pay, Makro, and Builders Warehouse, dramatically improves public access to e-waste recycling facilities across all nine provinces.



Waste Bin Placement

Location	PnP	Builders Warehouse	Makro	Projects	Total
Eastern Cape	3	0	0	0	3
Free State	1	0	1	0	2
Gauteng	39	2	11	4	56
Limpopo	0	0	1	0	1
KwaZulu Natal	20	0	3	0	23
Western Cape	30	2	2	10	44
Mpumalanga	1	0	1	0	2
North West	1	0	0	0	1
Northern Cape	0	0	0	0	0
TOTAL	95	4	19	14	132

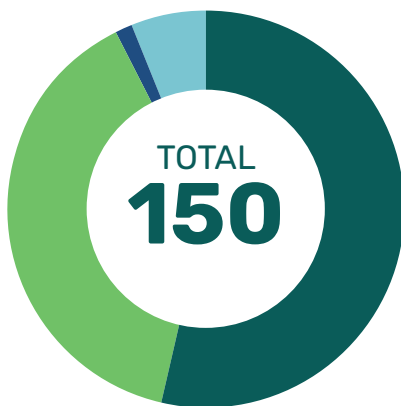
Buy-Back and Drop-off Centres

Current Location	GeT	Desco	Ewaste Africa	Projects	Total
Eastern Cape	-	-	-	-	0
Free State	-	-	-	-	0
Gauteng	-	1	1	-	2
Limpopo	-	-	-	-	0
KwaZulu Natal	-	1	1	-	2
Western Cape	10	1	-	3	14
Mpumalanga	-	-	-	-	-
North West	-	-	-	-	-
Northern Cape	-	-	-	-	-
TOTAL	10	3	2	3	18

Jobs

Building a Green Economy

Our operations are a powerful engine for socio-economic development. Through our network of service providers and enterprise development projects, we created 150 new, sustainable jobs in 2025. This brings the total number of individuals whose employment has been directly supported by ERA to 480 over the past three years. Our job creation initiatives continue to focus on providing meaningful opportunities for youth, women, and persons with disabilities, ensuring that the benefits of the circular economy are shared by all.



Race

- AFRICAN (80)
- COLOURED (59)
- INDIAN (2)
- WHITE (9)



Gender

- MALE (120)
- FEMALE (30)



Nationality

- MALAWI (1)
- SA (147)
- ZIMBABWE (2)
- POLISH (1)



Advancing Municipal Collaboration

Effective national e-waste management is impossible without collaboration with local government. Recognising this, ERA has been responsive to every opportunity for engagement, throwing the net wide to build an ever-growing network of municipal partnerships. Our work in 2025 was defined by a crucial evolution: moving from a series of bespoke projects to the development of a powerful, replicable framework for municipal engagement, positioning us for a concerted national programme of support in 2026.

This framework, captured in a standardised Annexure to our MOUs, allows for the rapid assessment of opportunities and their translation into sustainable EPR implementation.

It is built on a threefold strategy:

- 1. Extending Waste Collection Infrastructure:** Providing ERA collection bins at municipal sites, schools, and other public points to divert e-waste from landfill at no cost to the municipality.
- 2. Supporting Local SMMEs and Informal Reclaimers:** Leveraging municipal insights to identify and empower local enterprises and reclaimers, integrating them into the formal value chain in support of municipal collection objectives.
- 3. Co-investing in MRFs:** Where viable, co-investing in the WEEE-portion of municipal Material Recovery Facilities to build long-term infrastructure.

A fourth, cross-cutting theme of Collaboration in Public Awareness and Education underpins all our work, ensuring that infrastructure is supported by community buy-in.

In 2025, this framework guided our active partnerships across the country:

- **Drakenstein Municipality:** Provided infrastructure, PPE, and training to 35 informal reclaimers, creating market linkages and integrating them into our network.
- **Greater Tygerberg Partnership:** Supported this municipality-adjacent Community Improvement District (CID) with appliance repair training for Wastepreneurs and infrastructure for community collection projects.
- **Rustenburg Municipality / Royal Bafokeng Administration:** Laid the foundation for a major 2026/7 project to service 29 villages, 32 schools, and 12 clinics, accelerating a local waste company to manage e-waste for the region.
- **Gauteng and Western Cape Provincial Governments:** Deepened our partnerships through SMME development and the placement of young female interns, building a talent pipeline for the green economy.
- **Discussions are also underway with key metros like Tshwane, Johannesburg and Lephalale Local Municipality.**

Informal Waste Reclaimers

Informal Sector Integration: Empowerment and Environment

The informal sector is a vital part of the recycling economy, and their integration is a core component of our strategy and mandate. In 2025, our Informal Waste Reclaimer programme grew significantly, supporting 1,663 unique informal waste reclaimers – a 39% increase from 2024. These entrepreneurs collected 114,629 Kgs of whole e-waste units, preventing hazardous informal dismantling and ensuring proper treatment, while earning a direct service fee of R1/kg above the buy-back centre gate fee for their crucial efforts. This programme is a clear example of how environmental responsibility and social empowerment can go hand-in-hand.

2025's Headline Results for this metric:

Metric	No.
Unique Transactions	2 522
Total Weight – Whole Units (Kgs)	114 628
Unique Individuals	1 663
TOTAL Remuneration	R 114 628



Products (Complete Unit)	Kgs	Units	Ave Kgs
Computer	1 542	39	39,55
Freezer	934	87	56,71
Fridge	326	357	68,14
Geysers	20 003	323	61,93
Irons	248	184	1,35
Microwave	8 625	580	14,87
Printers	778	12	64,88
Stove	11 851	256	46,29
Tumble Dryer	382	59	40,37
Washing Machine	39 937	625	63,90
TOTAL	114 628	2 522	45,45



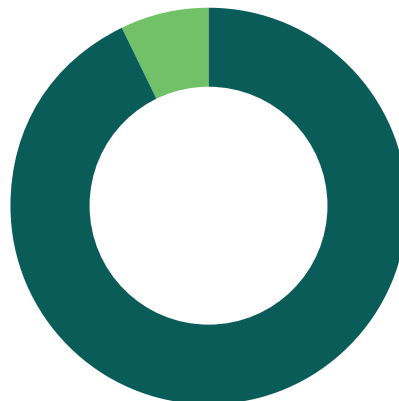
Race

- COLOURED (67%)
- AFRICAN (17%)
- WHITE (16%)



Employment

- EMPLOYED (53%)
- UNEMPLOYED (47%)



Nationality

- SOUTH AFRICAN (1)
- FOREIGN (147)

Human Resources - Our People, Our Strength

The remarkable achievements of 2025 are a direct reflection of the dedication, resilience, and talent of the ERA team. In a year of unprecedented growth and operational success, our lean, focused team delivered extraordinary results, and we extend our deepest gratitude for their unwavering commitment to our mission.

2025 was also a year of organisational change. We thank all team members, past and present, who have contributed to ERA's journey and helped build the strong foundation we stand on today.

As we look to 2026, we are excited to enter a new phase of growth. This will include the recruitment for key strategic positions to further enhance our capabilities. We are committed to strengthening our human resources function to better support talent development, ensuring we continue to build a multi-talented, multi-skilled, and dynamic team. Our people are our greatest asset, and investing in them is paramount as we continue to steer ERA towards even greater success.





Ashley du Plooy
Chief Executive Officer



Levanya Reddy
General Manager



Alex Cremer
Divisional Director: Lighting &
Stakeholder Management



Brontë Moeti
Research and Compliance
Officer



Bongiswa Ntsoni
Finance Manager



Celeste Dyers
Executive Administrator



Aurelia Forbes
Office Administrator



Khanyiswa Dziba
Admin Assistant

Public Awareness and Education

Public participation is key to high collection rates. In 2025, our campaigns reached millions of South Africans. The Pick n Pay Schools Campaign, in partnership with Cartoon Network, distributed educational posters to 2,675 primary schools and saw over 54,000 downloads. Our E-waste Matters campaign, aligned with International E-waste Day, generated 15,000 social media views and drove traffic to our collection points. In total, our social media channels achieved a reach of over 1.3 million, keeping e-waste recycling top-of-mind for consumers.

Key Education and Awareness Indicators

Media Circulation	11 Media Clippings
Social Media Reach	1,358,249 Facebook, Twitter, Linked-in and Instagram
Social Media	3 500 Followers
PR Value (Rands)	500 000 AVE
Web Traffic	28 000 ERA Website and campaign micro sites



NATIONAL E-WASTE DAY 25

FIND AN E-WASTE BIN

era E-WASTE RECYCLING AUTHORITY
PEOPLE. PLANET. PURPOSE.

ERA NPC
November 6 at 8:01 PM

URGENT REMINDER! Competition ENDS SOON!
Hey everyone! The ERA E-Waste Competition is officially winding down, and you only have ONE AND A HALF WEEKS LEFT to partic... See more

THIS NATIONAL E-WASTE DAY STAND A CHANCE TO WIN

1 OF 8
PHILIPS AIRFRYERS

& 1 OF 2
PHILIPS COFFEE MACHINES

era E-WASTE RECYCLING AUTHORITY
PEOPLE. PLANET. PURPOSE.

CAPE Business News

FOUNDED 1988 National Distribution SEPTEMBER 2025



ERA leads South Africa's e-waste recycling under EPR

By Adriaan Erasmus

South Africa's e-waste recycling is set to be transformed by the introduction of Extended Producer Responsibility (EPR) regulations. ERA leads the way in this new era of responsible recycling.

Public education remains critical for e-waste success. ERA regularly visits schools and universities to educate young people on responsible recycling. The organization also provides training for informal sector workers to ensure they are ready to receive and recycle e-waste responsibly.

During awareness and participation, ERA has established 200 collection bins across the country, with plans to add 50 more this year. The bins are placed in high-traffic areas like shopping malls, schools, and universities. ERA also provides training for informal sector workers to ensure they are ready to receive and recycle e-waste responsibly.

ERA has established 200 collection bins across the country, with plans to add 50 more this year. The bins are placed in high-traffic areas like shopping malls, schools, and universities. ERA also provides training for informal sector workers to ensure they are ready to receive and recycle e-waste responsibly.

Don't just dump IT, phones, appliances

As Black Friday (28 November) and Cyber Monday (1 December) approach, ERA NPC is urging consumers and businesses to focus on responsible e-waste recycling. The Claremont based non-profit company aims to help producers meet their Extended Producer Responsibility (EPR) obligations in a simple, efficient, affordable, and traceable way.

Ashley du Plooy, chief executive officer of ERA NPC, said: "We urge the public to responsibly recycle their old and unwanted electrical and electronic appliances before purchasing new ones, helping to mitigate the looming e-waste crisis."

South Africa is facing a critical challenge, often described as a "licking time bomb" by industry commentators like MyBroadband, as the volume of electronic waste continues to mount.

The statistics are concerning: The Surmounting Mountains of E-waste 2025 report highlights the exponentially growing quantity of electronic and electrical waste being generated in the country. This waste stream is the fastest-growing globally, and inadequate disposal practices, such as sending e-waste to landfill, risk contaminating soil and water with hazardous toxins like lead and mercury.

Du Plooy said this Black Friday and Cyber Monday millions of new products will be sold, inevitably leading to the discarding of older devices.

By preparing for new purchases through responsible recycling, South African consumers and businesses can actively prevent a surge of harmful e-waste from entering the environment.

RESPONSIBLE RECYCLING: Consumers and businesses have a clear role to play. Instead of hoarding or disposing of old devices improperly, ERA NPC encourages the public to use their extensive collection network.

Examples of small electrical appliances to recycle: small household appliances: Toasters, kettles, hair dryers, blend-



South Africans are encouraged to take their electronic waste to a Makro or Pick n Pay store and deposit them in the ERA e-waste bins. PHOTO: SUPPLIED

eranpc_z
Kyalami Grand Prix Circuit

Like by iamchaz13 and others
eranpc_z is insightful conversations, meaningful collaboration and a shared commitment to innovation and sustainability at @deltech Forum 2025... more

Good Morning Cape Town
with Lester Kiewit

Breakfast 6am-9am

Volvo's green tip of the week: How to responsibly dispose of e-waste with ERA

SA can turn e-waste crisis into economic powerhouse

By Anthea

While e-waste has long been considered a waste problem, it is now being seen as a potential economic powerhouse. The South African government is looking for ways to turn this crisis into an opportunity.

The EPR fees they are paying must be used to pay for the recycling of their own e-waste. This is a critical step in ensuring that the EPR system is self-sustaining and that the burden of e-waste disposal is not shifted to the taxpayer.

Without this funding, our program will be in jeopardy.

It is not just the public that is responsible for e-waste. It is also the responsibility of the government to ensure that the EPR system is effective and that the burden of e-waste disposal is not shifted to the taxpayer.

Without this funding, our program will be in jeopardy.

It is not just the public that is responsible for e-waste. It is also the responsibility of the government to ensure that the EPR system is effective and that the burden of e-waste disposal is not shifted to the taxpayer.

Enterprise Development Projects

We are committed to fostering a diverse and inclusive recycling industry. Our Enterprise Development (ED) and Supplier Development (SD) projects are designed to build a thriving ecosystem of SMMEs, with a strategic focus on empowering enterprises led by women, youth, and persons with disabilities. In 2025, we deepened our impact through the following key initiatives:

DFFE Imbizos and Community Engagement

- We supported the DFFE's national campaign through a series of Imbizos—a traditional South African forum for community dialogue—and EPR roadshows. These engagements are critical for strengthening waste education, assessing rural conditions, and identifying local SMMEs for partnership.

NEED

- Provided sustained operational support, including waste collection infrastructure and e-waste management equipment, enabling NEED to scale its operations and secure provincial waste stock.
- This direct support has enabled NEED's development into a reliable ERA supplier, a model so successful it has been endorsed by the DFFE for national replication.
- Facilitated advanced training and crucial market linkages to ensure their commercial sustainability.

E-Waste Buddies

- Sponsored seven young trainees, providing them with invaluable hands-on experience in e-waste dismantling

and processing, creating a direct pathway to employment and possibly entrepreneurship.

- The project, which also received operational support and infrastructure, has been endorsed by the DFFE for national replication due to its clear social and environmental impact.

New Earth Recycling

- Enabled the development of New Earth Recycling into a valued ERA supplier through targeted operational support
- Provided increased capacity through the placement for seven youth trainees being upskilled in e-waste dismantling and processing.

Western Cape Government Intern Placements

- In a landmark partnership with the Western Cape Government, we facilitated industry placements for 15 young women (at E-waste Buddies and New Earth Recycling), with a further 13 new interns scheduled for the 2026 intake, creating a powerful talent pipeline.
- Sponsored and hosted the DFFE's provincial EPR Roadshow, strengthening our collaboration with government.

Greater Tygerberg Partnership

- Empowered local 'Wastepreneurs' with practical appliance repair training, a critical skill for moving up the value chain from collection to refurbishment.
- Provided essential waste collection infrastructure and supported surrounding schools' e-waste collection projects, embedding recycling in the community.



Drakenstein Municipality

- Provided essential waste collection infrastructure and PPE to informal reclaimers in the Drakenstein municipality, while delivering training and creating market linkages to support their safe and profitable integration into the formal value chain.

We extend our sincere gratitude to every partner, municipality, and organisation that has opened their doors to work alongside ERA. The circular economy cannot be built by any single entity. It is constructed relationship by relationship, project by project, and community by community. Our ED and SD partners occupy a role that goes far beyond service delivery - they are proof of concept. They demonstrate, in real and tangible terms, that inclusive economic participation and environmental responsibility are not competing goals but deeply complementary ones. Their commitment to this work, often in the face of real operational challenges, is what gives ERA's mandate its meaning. We are honoured to walk this road with them.



Eco Labelling

ERA, under the direction of its Technical Committee, has continued to engage Producer Members to address the requirement specified in the EPR Regulations for the Electronic and Electrical Equipment (EEE), Lighting and Battery sectors:

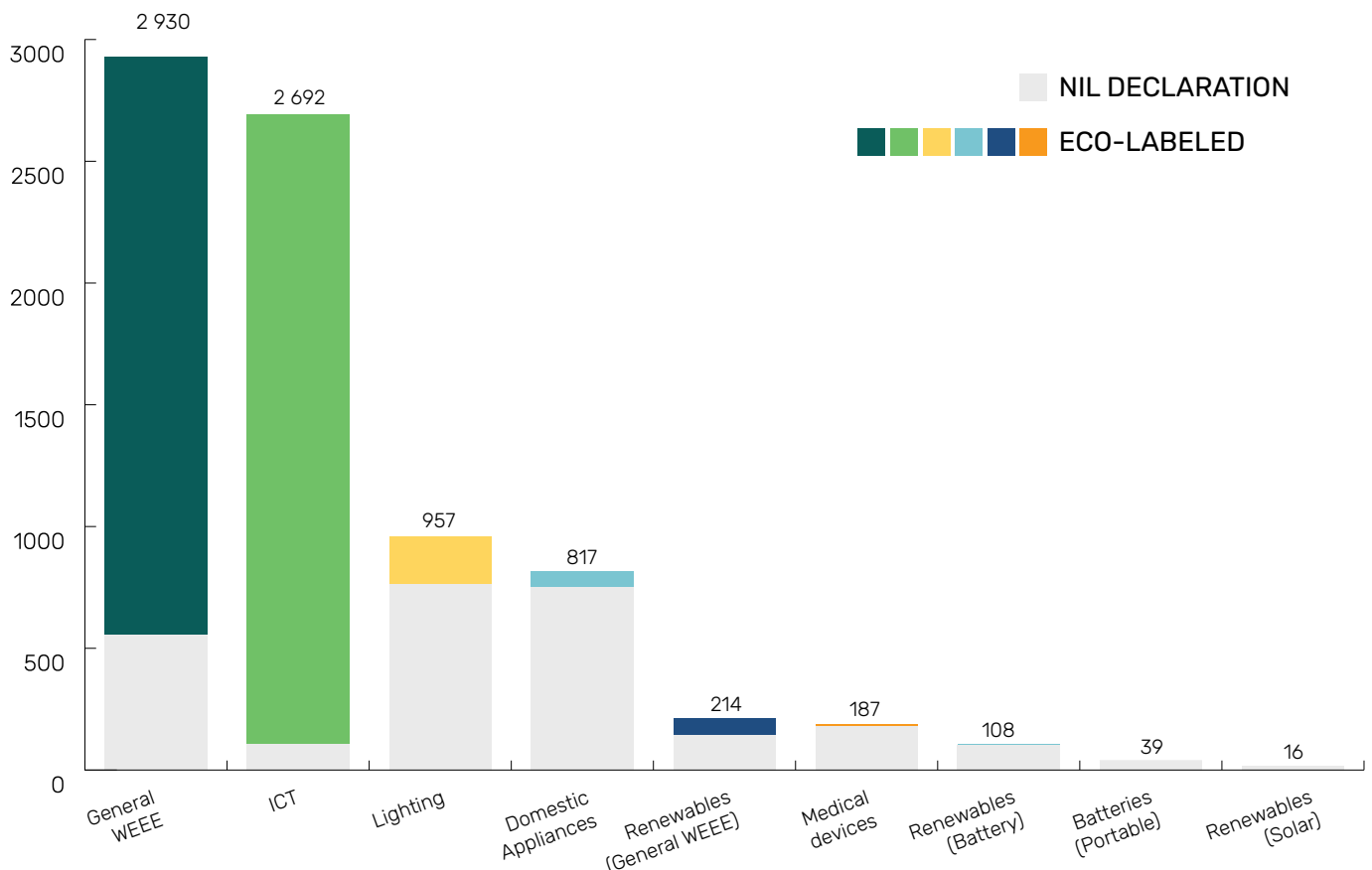
EPR Regulations Clause 5.1(z):

“Implement environmental labels and declaration for the identified products in accordance with SANS 14021 and SANS 14024 within a period of 3 years”.

Building on the foundational work established in 2024, the 2025 compliance period saw the deployment of a more stable, structured online facility for submissions. This transition was aimed at improving data quality and easing the reporting burden on producers. We are pleased to report that this approach yielded significantly richer, more granular data, allowing for a robust analysis of sector-level compliance and the specific types of environmental declarations being utilised in the South African market.

For the 2025 reporting cycle, we received formal eco-label declarations from 31 unique Producer Members, encompassing 32 distinct product sector-level reports. These submissions detailed the eco-label status of 7,960 individual product entries across nine defined product sectors.

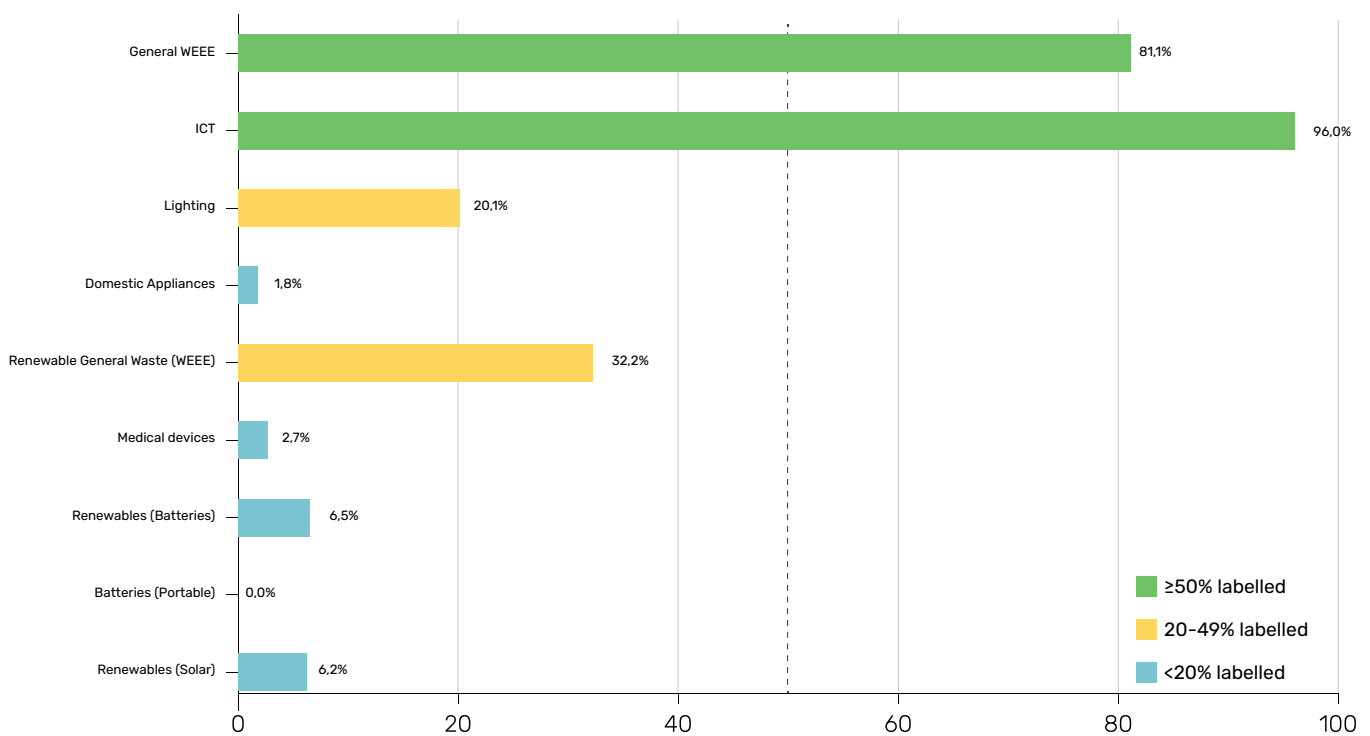
Figure 1: Product Declarations by Sector – Eco-Labelled vs Nil



A central objective of this data collection exercise is to quantify the gap between products placed on the market and those that possess formal eco-labels. Of the 7,960 products reported, 5,249 products (65.9%) were declared with a recognised eco-label, while 2,711 products (34.1%) were submitted as “Nil” declarations.

When examining sectoral readiness, the Information and Communication Technology (ICT) sector continues to lead the compliance effort, achieving an outstanding 96.0% compliance rate across 2,692 products. The General WEEE sector also demonstrated strong performance with an 81.1% compliance rate. Conversely, sectors such as Domestic Appliances (1.8%) and Medical Devices (2.7%) highlight critical gaps where targeted engagement and support will be required in the coming years.

Figure 2: Eco-label Compliance Rate by Sector

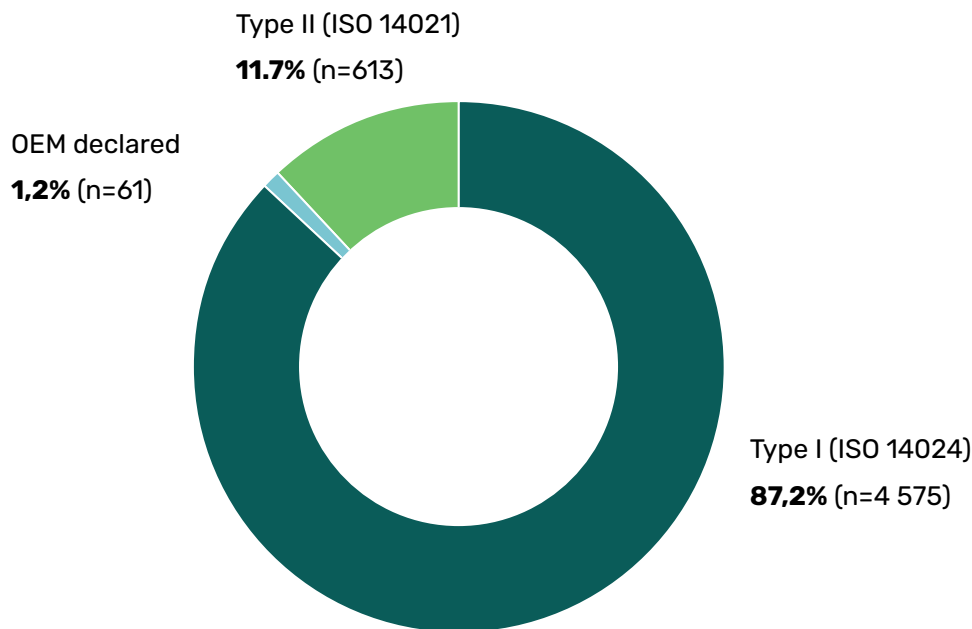


Eco Labelling (continued)

We are encouraged by the quality of the labels being submitted by compliant members. The analysis reveals a strong preference for rigorous, third-party certification. Type I (ISO 14024) labels dominated, accounting for 87.2% of all valid declarations, with the UL ECOLOGO and various tiers of EPEAT being the most frequently cited international standards. Encouragingly, there is also evidence of localised compliance, with 173 products specifically citing South African Energy Efficiency labels or NRCS VC9109 compliance.

Figure 3: Eco-label Type Distribution

(Eco-labelled Products only - n=5 249)



The 2025 eco-labelling data collection exercise represents a vital step forward in establishing a transparent and accountable baseline for environmental declarations in South Africa. We are grateful to the Producer Members who have invested the time and resources to provide this detailed information which will directly inform future engagement strategies and targeted interventions.



ECO

100% natural



Producer Members





*Producer registered under multiple EPR Notices

Audited Annual Financial Statements Summary

ERA Balance Sheet @ 31 December 2025

Balance Sheet	Items	Dec 2025 (Rm)	Dec 2024 (Rm)
Current Assets	Receivables	17,350	17,856
	Cash	14,018	9,462
Equity	Retained Income	23,142	11,697
Current Liabilities	Payables	8,842	16,272
	Tax	0,06	0,060

* Receive a full breakdown upon request.

ERA Income Statement @ 31 December 2025

Income Statement	Items	Dec 2025 (Rm)	Dec 2024 (Rm)
Revenue	EPR Fees	86,108	68,135
	Other Income	0,828	1,314
	Investment Revenue	0,702	0,310
Cost of Sales	Service Provision	63,317	51,111
Operating Expenses	Staff and Admin	12,877	10,350
Profit/Surplus	NPAT	11,444	8,298



E-WASTE
RECYCLING
AUTHORITY

Visit the ERA website to find a full list of e-waste drop-off spots around the country:

<https://eranpc.co.za/for-the-public/find-an-ewaste-drop-off-location/>



ERA NPC
erainfo@eranpc.co.za
+27 (021) 001 2186
eranpc.co.za

Office F01A, Lansdowne Building
Brookside Office Park
11 Imam Haron Road
Claremont 7708
Cape Town

Directors
Ashley du Plooy | Richard Noor
Yalekile Lusibane | Mark Saunders
James Mthethwa | Vaughn Parkin